

Physio + Fit

BALANCE TAPE



150% elasticity

Water resistant

Each application lasts up to 4 days

Hypo-allergic and suitable for most types of skin



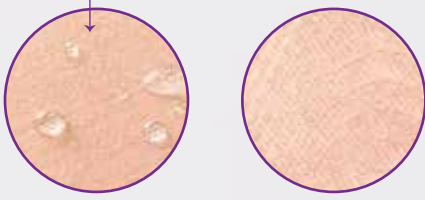
Indications

- Sports Injuries
- Soft Tissue Injuries
- Muscular Sprain and Strain
- Joint Instability
- Edema
- Pain and Spasm

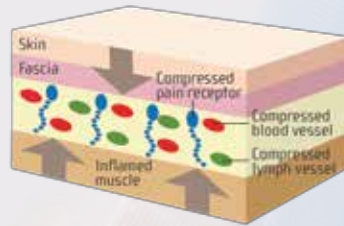
Benefits

- Improves Local Circulation
- Increase Lymphatic Drainage
- Reduces Inflammation and Swelling
- Improves Range of Motion by Reducing Pain
- Improves Muscle Function, Joint Function and System Function
- Supports Musculo-Skeletal System without Restricting Movement

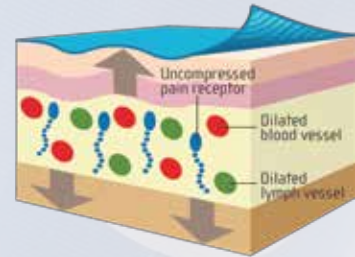
Water Resistant



Pre-Tape Application



Post-Tape Application



Improves Muscle Function and Muscle Performance

Manages acute problem and reduces the risk of chronicity. Taping application is directed either to stimulate or inhibit muscle function.

Reduces Pain

Produces mechanical tension and compressive forces to the skin altering skin tension over a region containing cutaneous sensory receptors.

Improves Vascular and Lymphatic Circulation

By opening lymphatic drainage, directly under the skin with the convulation resulted by elasticity of the tape.

Soft Tissue Support

Range of Motion

Joint Support

Muscle Support

Local Circulation

Pain and Spasm

Sprain & Strain

Ligament Injuries

Item Code	Colour	Size
V2U 2001-01	■ BEIGE	5cm x 5m
V2U 2001-02	■ BLUE	5cm x 5m
V2U 2001-03	■ PINK	5cm x 5m
V2U 2001-04	■ BLACK	5cm x 5m



360 Orchard Road, #05-02 International Building,
Singapore 238869

Tel: +65 6737 5330 Fax: +65 6736 1128

Website: www.v2uhealth.com | www.physiofittapes.com

Email: sales@v2uhealth.com